



Fibo

Fibo | A smart way to transform your wall

Fibo reference projects:

Why Fibo is chosen!

See all our reference projects at www.fibosystemusa.com

Fibo | Waterproof wall system

Innovative walls since 1952



Since 1952, we have combined our legacy of Scandinavian nature and style with our ability to consider limitations as our next chance to innovate. Fibo has delivered hundreds of millions of square feet over the years for wet rooms and other demanding rooms. Today, Fibo is the leading supplier of high quality waterproof wall panel systems, and can be purchased throughout Scandinavia,

Northern Europe, North America and New Zealand. We are creating interior technology for the future to come. We believe that the room of opportunity always is the most important room. Whether your challenges are of the technical, economical or the creative sort – Fibo will always find a smarter way to transform your wall.


*Invented, Designed
and Produced in Norway*

www.fibosystemusa.com



Fibo | Reference project

Residential Low Maintenance 'Age in Place' Shower

In September of 2019 this residential owner in Soap Lake Washington was looking to renovate an old bathroom to provide a low maintenance shower and bathroom with a contemporary look.

An 8 panel Cracked concrete Fibo wall panel kit with a matte finish was provided to update the look and eliminate grout joints from the old tiled shower. The remodeling contractor liked the time-effective laminate wall panel installation and the owner is enjoying not having to use a tile scrub brush ever again.

A simple to clean solid surface white matte shower pan with a custom drain location was used to eliminate the cost of moving the plumbing. Solid surface recessed niches and a corner bench seat also provide a simple to maintain – yet safe – bathroom.



“

Solid surface recessed niches and a corner bench seat also provide a simple to maintain – yet safe – bathroom.

Residential Homeowner

Advantages

- Easy to clean grout free shower wall panels
- A time-effective installation for a first-time contractor using the Fibo panels
- A contemporary, minimalist look with a cement-look

Client

A residential homeowner in Soap Lake Washington – project installed by a first-time installer of Fibo.

Product/Delivery

- An 8 panel Fibo wall panel kit in the Cracked Concrete 2204 F00 including adhesives and trim materials.
- 67" x 50" solid surface shower pan
- 40" x 80" glass block prefabricated shower wall by Innovate Building Solutions.



Fibo | Reference project

Affordable Single-Family Rental Housing

When your business model is to buy, fix and monetize affordable housing inside a city's core you need to find a cost-effective solution, but you need to get jobs done quickly so you can space leased.

This Pennsylvania-based project use 6-panel tub/shower alcove kits purchased 6 to 8 at a time so their field crews can quickly install multiple unit. Using a textured slate pattern provides a realistic stone look. The low maintenance benefits of the Fibo wall panels eliminate the hassles of this firm's maintenance staff cleaning grout joints when one tenant leaves and another one comes.

The brushed nickel shower panel system provides a wonderful compliment to the grout-free wall panels.



“

The brushed nickel shower panel system provides a wonderful compliment to the grout-free wall panels.

Residential Homeowner

Advantages

- High fashion stone-tile look helps affordable rental homes get leased fast.
- Easy to clean grout free shower wall panels
- A time-effective installation where several tub/showers can be done at once

Client

A boutique real-estate investment firm whose model is to buy, fix and monetize.

Product/Delivery

- Several 6-panel Fibo wall panel kits in the 1533 Gris Grande including adhesives and trim materials.

Fibo

Fibo | Reference project

The four wall bath tub surround solution

This is actually a four wall installation.
The way the corners joined and finished
was amazing.

Installing Fibo can and will show imperfections in the actual
walls but making the right cuts in the right places can help hide
those imperfections even with a tile pattern as you see
in this photo.



“

*Much easier to install even in an application such as
we used it for in a four wall shower and seat combo!*

Dave Carter & Associates

Advantages

- Rapid and easy assembly
- Good quality
- Many decor choices

Product/delivery

- Marcato - Grey Sahara



Fibo | Reference project

Euro-inspired Scandinavian Look Bathroom in the United States

After recent trips to Europe this California Architect decided it would be wonderful to surprise his son in Portland Oregon with a Euro-inspired bathroom.

Instead of doing the 'shower alcove enclosure only' (which is typical in the United States) – this customer wanted the low-maintenance, high-style look of a fully panels bathroom system with a large tile format look to make this small bathroom appear larger.

To create this motif a Transitional White high gloss 16-panel shower kit was selected in the Fibo Denver white 3091 M63 HG. To carry the Scandinavian minimalist look throughout the bathroom a wall hung vanity and toilet were used.



This California Architect decided it would be wonderful to surprise his son in Portland Oregon with a Euro-inspired bathroom.

Innovate Building Solutions

Advantages

- Large format tile look to make a smaller bathroom appear larger.
- The ability to DIY this installation with no prior experience.
- A Euro/Scandinavian inspired look

Client

A residential architect in California doing a DIY project for his son.

Product/Delivery

- 16 panel bathroom wall panel kit with adhesives and trims.



Fibo | Reference project

Low maintenance Spa-inspired shower in new construction United States

This Elizabethtown Pennsylvania couple had a challenge on their hands when designing and building their home.

When renovating their large master bathroom, they not only wanted a bright, inviting spa shower – but did not want to be forced onto their hands and knees to clean it. They went looking for a solution.

White Fibo click-lock-and-seal wall panels were chosen for not only their style, but their simplicity to maintain. To save money the couple chose to do this installation themselves.

A dark floor covering was chosen to provide a contrasting look to the modern white shower and white vanities. A vessel stand-alone tub was added for long-needed relaxation.



Advantages

- Simple to clean
- A white spa-inspired look using both large format horizontal tiles and vertical accent borders

Client

A residential do-it-yourself couple.

Product/Delivery

- A 9 panel kit including 4 panels of the Denver White 3091 M63 and 5 decorative white vertical accent borders of white slate 4091 ME88 SL.

“

This California Architect decided it would be wonderful to surprise his son in Portland Oregon with a Euro-inspired bathroom.

Innovate Building Solutions



Fibo | Reference project

Local Homes, Walsall factory

Local homes who are owned by The Accord Group have a purpose built factory in Walsall producing pods.

Fibo's waterproof wall panel system has been used in a successful trial of kitchen and bathroom 'pod' installation in a modular building project. Local Homes, the low carbon modular builder for social housing, completed the steel-framed pods in its Walsall factory.

Fibo panels were fitted to the bathrooms and kitchens instead of ceramic tiles. The pods were then lowered by crane into each of the 14 homes in a development for housing organisation Accord at Bilston Road, Wolverhampton. Using the panels as a modern alternative to traditional tiles saved 15 days labour on the build.

As a modular build, products that were quick and easy to install were essential, but with no compromise on quality. Both panel designs – Grey Concrete in the bathrooms, White Silk in the kitchens – are Class 1 fire rated, meeting the safety requirements of the spec.



“

As a modular build, products that were quick and easy to install were essential, but with no compromise on quality!

Local Homes

Advantages

- Quick and easy to install
- Good quality

Client

Local Homes - low carbon living

Product/delivery

- Marcato - EM Grey Concrete
- Legato - S White

Fibo

Fibo | Reference project

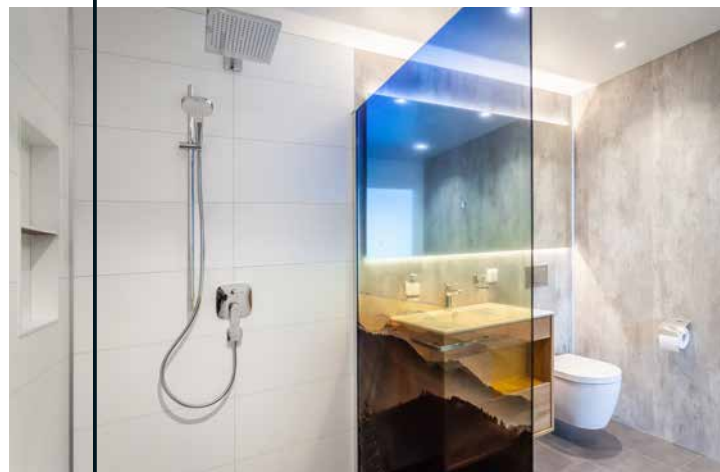
ESTEC GmbH & Co. KG

The German company Estec has developed a new bathroom concept for apartments/condos to achieve a higher standard in their POD production with varying sizes of bathrooms.

The surface should be 100% watertight, have an esthetic appeal, be hygienic and easy to clean. The bathrooms from Estec will in the future come as POD's as well as finished wall elements.

Since the Fibo system was new to us, the Fibo team gave us excellent installation training doing our first test installations. We have had no problems with the Fibo system so far and with more experience we have also been able to optimize our installation process.

The result has been so appealing that we now are building larger volumes with the Fibo system.



“

*The Fibo system has been very well received by our customers.
We are very optimistic about using Fibo in future projects.*

Udo Scharr, Sales ESTEC GmbH & Co

Kundevurdering

- The product training as well as the general product quality are outstanding.

Fordeler

- The fact that the Fibo system is 100% waterproof as well as the quick installation
- The large range of designs have great esthetic appeal

Kunde

ESTEC GmbH & Co

Product/delivery

- Fortissimo - S White / 462 m²
- Marcato - EM Sahara / 134 m²

Fibo

Fibo | Reference project

Halton Housing/ Simply Modular

In Widnes, Simply Modular is building four apartments in a trial project for Halton Housing.

The objective is to show the value of modular buildings, and with four two-bedroom apartments to be completed in just 16 weeks, the rapid assembly Fibo wall panels and Kitchen Boards were the perfect choice for showers and walls above the kitchen counter.

The fast build time allowed Halton Housing to rent the apartments earlier, and showed the great potential for both Halton and social housing projects in general by doing so.



“

We used only tiles in the past because wall panels have generally not been up to the same quality. But Fibo wall panels turned out to be much better!

Allan Foster, Technical Director, Simply Modular

Client feedback

We used only tiles in the past because wall panels have generally not been up to the same quality. But Fibo wall panels turned out to be much better! They are absolutely superior in terms of the knowledge and time required to assemble them, while the quality is there along with a good selection of decors.

Advantages

- Rapid and easy assembly
- Good quality
- Many decor choices

Client

Halton Housing/Simply Modular

Product/delivery

Fortissimo - HG Milano Anthracite

Fibo

Fibo | Reference project

De Wit Chalets

When client's come by to have a look during the building process, we often get the following reaction: "Well, that's been grouted neatly".

People often don't even notice that they're not looking at regular tiles!

In 2012 we slowly started using Fibo. Back then we had quite a few doubts about applying wooden panels in wet rooms. Our clients would actually also rather stick to the more commonplace tiled bathrooms. On top of that we also couldn't find any financial benefit compared to regular tiles.

In 2014 we saw an increase in labor costs and partly because of that the difference between Fibo and traditional tile became smaller. Another benefit of Fibo was that one could walk away during the activities, to take up another chore. With traditional tiling this is not so easy, because you have to take into account the drying times of the materials. Yet another benefit of Fibo is that it can be applied dry and clean.

In regard to the available designs Fibo took a big step forward once the concrete designs were added to the collection. Now we can create fancy combinations, which allows us to offer Fibo in a higher segment. The appearance of for example Grey Concrete and Rough Copper gave a positive impulse.



“

A bathroom decorated with Fibo is less vulnerable during transport of the mobile homes, compared to traditional tiles which often crack or tear.

Peter Starreveld, Owner/Director, De Wit Chalets

Client feedback

When we speak to clients who have been living in their homes for a while already, we often hear that Fibo is such an easy product to clean. The service that RET Bouwproducten offers is simply great.

Advantages

- The possibility to "walk away" during the installation process, to get another panel
- Applied dry and clean
- A varied range of decors

Client

De Wit Chalets

Product/delivery

Colour Collection - HG Denver White



Fibo | Reference project

AMOVEO

AMOVEO is a vertically integrated engineering, procurement, construction and development manager specialising in the end-to-end supply of modular solutions to the Australian construction Industry.

A vertically integrated engineering, procurement, construction and development manager specialising in the end-to-end supply of modular solutions to the Australian construction Industry.

“Several years ago, I was introduced to a waterproof wall panel system called Fibo. Fibo is developed and manufactured in Norway where it is used extensively as an alternative to ceramic tiles. Although initially sceptical, the concept of a panel system was very familiar due to my experience as a carpenter. I found working with Fibo very straight forward and was really impressed by the design of the locking tongue and groove. In no time it was easy to understand the benefits that wall panels offered over tiling.

As demand for new buildings grows in Australia, I see a need for greater efficiency in construction becoming a necessity. This will change construction methodologies with smart products like Fibo being used more frequently, as it is in other parts of the world. I have made significant career decisions on the strength of that belief and am working hard to see this become a reality. I believe that I can offer my clients better outcomes by choosing to challenge the ‘way things are’ and by trying hard to stay one step ahead of the crowd.”

Replacing ceramic wall tiling with Fibo resulted in a significant improvement to the efficiency and throughput of our production line. Fibo fundamentally changed for the better the way I consider the adoption of new materials and methodologies!

John Annear, Registered Builder, Amoveo Pty Ltd, Australia



Advantages

- Fewer trades required, which has meant that on some projects we no longer need Tilers.
- In a single application we can line, waterproof and finish a wet area wall, resulting in a reassignment of two bays to improve productivity.
- Time previously lost while waiting for membranes to cure, which represented a significant production risk during periods of high humidity, were no longer an issue.
- The ease and speed of fitting off fixtures without the need to pre-drill is a big productivity gain.
- For most fixings there is no need to noggin-out the frame as the Fibo panel easily supports robe hooks, towel rails, shower screen channels and toilet roll holders thereby reducing materials and weight
- **With Fibo we have far less in-transit damage compared to ceramic tiles, which can chip, pop out or crack.**

Client – AMOVEO Pty Ltd, Australia:

Modular production is managed via a series of sequential work ‘Bays’, whereby a module enters the factory at one end as a steel frame and leaves at the other as a part of an Australian building.

The production line consists of 12 Bays, where a defined set of tasks are completed before a module moves down the line. The ideal scenario is when production is scheduled so that all modules progress to the next bay at the same time. This means that the number of tasks and resources allocated along the production line are balanced.

Fibo

Fibo | Reference project

Maat - Feeling home

We've been applying Fibo in our bathrooms for about eight or nine years now. Previously we used polyester boards and tiles for our bathrooms and toilets.

The main reasons why we switch are the improved production speed and the appearance. Fibo is an excellent alternative for ceramic tiles, which in our field of business (mobile home building, wood construction), has proven to be a difficult process.

When we started using Fibo we had quite some doubts about applying wooden panels in a wet room. After a while though, we gained trust in the product. Nowadays we apply Fibo in all our bathrooms, and we do so with full satisfaction. Compared to polyester, which we used to apply a lot, Fibo has a much nicer appearance.

The reaction of our clients is mostly astonishment, because they initially think Fibo panels are real tiles, until they touch them. People are always enthusiastic, especially when they realize maintenance is much easier compared to ceramic tiles.



“
*After a while, we gained trust in the product.
Nowadays we apply Fibo in all our bathrooms,
and we do so with full satisfaction!*

Peter Louwerens, Buyer - Maat - Feeling home



Client feedback

- The main reason why we switched to Fibo are the improved production speed and the appearance.

Advantages

- Maintenance and cleaning of Fibo
- The service provided is excellent

Client

MAAT - Feeling home

Product/delivery

- Colour Collection - HG Denver White
- Marcato - different decors

Fibo

Fibo | Reference project

Shower corner, Arizona

We were looking for a low cost efficient replacement for a tile application. This exceeded our expectations with the ease and speed of install.

Simple and basic this customer was looking to utilize the corner of the bathroom and allow the rest of the room to be open.

Using a regular shower pan two Fibo walls and a glass shower wall helped them achieve their goal. Notice the accent panel 1066 ME88 that breaks up and adds to the pattern of the 2204 F00 Marcato Cracked Cement.



“

We were looking for a low cost efficient replacement for a tile application. This exceeded our expectations with the ease and speed of install.

Dave Carter & Associates

Advantages

- Durable surface
- Environmentally friendly
- Cost efficient

Product/delivery

- Marcato - S Cracked Cement
- Marcato - Black ME88



Fibo | Reference project

Domino's Pizza, Halmstad

Domino's Pizza in Halmstad was built with a wall panel from Fibo, which with its durability and easy cleaning is well-suited to kitchens, restrooms and highly trafficked public areas.

Mässbolaget was responsible for the decor of the pizza restaurant. They are among Sweden's leaders in interiors of restaurants, cafés, trade shows and events, and now use Fibo for all their restaurants.



Advantages

- Easy to clean and maintain
- Durability
- Design
- Cost effective

Client

Mässbolaget

Product/delivery

In total approx. 50 m² wall panels was delivered

- Colour Collection – HG Denver White

Fibo

Fibo | Reference project

Cafè Gaflen

Cafè Gaflen is situated by the beach in Jylland's idyllic Hvide Sande, Denmark.

It was built by a married couple who had first tested Fibo wall panels for one month at a large kitchen – to find that it was easy to clean and maintained its integrity.

So they decided to use Fibo everywhere in their new café – in the public area, in the kitchen and in all restrooms. In total this meant more than 400 square meters.

“It was difficult to choose decors and colors because there are so many different variants. But it gave us the opportunity to use many different expressions in the café's decor,” said the café owners.



“

The carpenter said that the panels were easy to work with!

Trine and Carsten Davidsen, Cafè Gaflen

Client feedback

–The carpenter said that the panels were easy to work with. It looks good, is easy to clean and maintenance-free, and the customers think it's cool that we've built in a somewhat raw style.

Advantages

- Easy cleaning and maintenance
- Durability
- Exciting design

Client

Trine and Carsten Davidsen

Produkt/leveranse

In total approx. 400 m² wall panels was delivered

- Marcato - S Cracked Cement

Fibo

Fibo | Reference project

Circle K Kjellstad

Circle K Kjellstad is a busy gas station by the E18 in Lier between Drammen and Oslo.

It offers charging stations for electric vehicles and food to satisfy the many commuters.

In 2013, it underwent a major renovation that later became the prototype for what the then Statoil Fuel & Retail stations should look like.

In the restrooms, Fibo wall panels from the Fortissimo Collection in various white tile patterns have been used. Besides appearance, the choice was based on a reasonable total cost, easy cleaning and durability.



“
Besides appearance, the choice was based on a reasonable total cost, easy cleaning and durability.

Circle K Kjellstad



Advantages

- Easy cleaning
- Durability
- Cost effective

Client

Circle K Kjellstad

Product/delivery

- Fortissimo - HG Denver White

Fibo

Fibo | Reference project

Circle K Kjerlingland

Circle K Kjerlingland is located just off the E18 outside Lillesand.

In line with guidelines for renovating the chain's gas stations, Fibo wall panels have been used in the restrooms. The panels come from the Fortissimo Collection with various tile formats.

Besides appearance, the choice was based on a reasonable total cost, easy cleaning and durability.



“

Besides appearance, the choice was based on a reasonable total cost, easy cleaning and durability.

Circle K Kjerlingland

Advantages

- Easy cleaning
- Durability
- Cost effective

Client

Circle K Kjerlingland

Product/delivery

- Fortissimo - HG Denver White

Fibo

Fibo | Reference project

Circle K Varberg

As in Norway, Circle K has used Fibo wall panels at several of its gas stations in Sweden.

It's all about a reasonable total cost, easy cleaning and durability for walls that have to withstand heavy use and a lot of traffic.

At Circle K Varberg, the restrooms have been renovated with a high-gloss panel that results in a stylish, maintenance-free solution.

Sweden | Commercial | Gas stations

“

It's all about a reasonable total cost, easy cleaning and durability for walls that have to withstand heavy use and a lot of traffic.

Circle K Varberg



Advantages

- Easy cleaning
- Durable
- Nice design
- Cost effective

Client

Circle K Varberg

Product/delivery

- Colour Collection - HG Denver White
- Colour Collection - HG Milano Anthrasite

Fibo

Fibo | Reference project

General Coach

Fibo Kitchen Board is really easy to cut,
and a safe backsplash solution.

This backsplash application was ideal for a situation where we would have spent a lot of time with tile. Not only was it easy to install but the design really made this room pop!



“

We were really amazed at how the Fibo boards cut easily and did not chip when we made smaller cuts!

Dave Carter & Associates

Advantages

- Modern design
- Easy cleaning
- Rapid and easy assembly

Product/delivery

- Marcato - S Cracked Cement



Fibo | Reference project

Flesberg elementary school

On September 4, 2019, the new elementary school for the Municipality of Flesberg was opened by the County Governor, Valgerd Svarstad Haugland.

Fibo delivered more than 1700 square meters of wall panels in the Sunflower, Oslo, Titan and Aquamarine decors.

The school was built of solid wood and has space for 420 students. The school has an affiliated sports hall with a playing surface equivalent to a handball court and a swimming facility will be added with a 21 x 25 meter pool.



“

Fibo has given us a safe solution!

Backe Stor-Oslo

Advantages

- Safe solution
- Rapid assembly

Client

Backe Stor-Oslo

Product/delivery

In total approx. 1750 m² wall panels was delivered

- Colour Collection – HG Sunflower
- Colour Collection – HG Oslo
- Colour Collection – HG Aquamarine
- Legato – S Titan



Fibo | Reference project

Lyngdal secondary school

Lyngdal secondary school was opened ostentatiously for the start of school in the fall of 2013.

The two-floor building was set up with movable non-load-bearing walls so it is easy to make new room solutions as needs change.

The architect at Asplan Viak wanted each grade to have its own color code. Much of this was solved by wall panels in three different colors from Fibo's Colour Collection. In addition, the panels were engraved with old words and expressions from Lyngdal that have helped to give the school its unique identity.



“

The architect at Asplan Viak wanted each grade to have its own color code.

Lyngdal secondary school

Advantages

- Many different colors

Client

Kruse Smith Entreprenør AS
Arkitektkontoret Asplan Viak

Product/delivery

- Colour Collection HG - three different decors

Fibo

Fibo | Reference project

Fredborg school

The new Fredborg school in Österåker is being built according to strict specifications for the environment, functionality and pedagogical qualities.

The kindergarten and elementary school with six sections will be complete in December of 2019.

Winge Byggnads AB wanted a durable, environmentally friendly, and cost-efficient surface finish on walls that would have to tolerate rough use and therefore chose three different Fibo wall panel decors.



“

Fibo is so much more fun to assemble than tiles!

Winge Byggnads AB

Client feedback

–Fibo is so much more fun to assemble than tiles!
Guaranteed we will be using more Fibo in future.

Advantages

- Durable surface
- Environmentally friendly
- Cost efficient

Client

Winge Byggnads AB

Product/delivery

In total approx. 750 m² wall panels was delivered

- Legato - S White
- Colour Collection - HG London
- Marcato - EM Marina Grey Oak

Fibo

Fibo | Reference project

Eilert Sundt High School

Vest-Agder County Council has decided on a comprehensive rehabilitation of Eilert Sundt High School branches in Farsund and Lyngdal.

In 2018, work started on a new building in Lyngdal where the contractor, Veidekke, chose Fibo wall panels for restrooms and showers.

The primary motivation to use Fibo was value for money, as well as rapid and easy assembly. Fibo held a course before start-up which contributed to this.



“

Fibo has been good at following up and lending assistance to the project underway!

Silje Skjefstad, Veidekke

Client feedback

Veidekke's Silje Skjefstad meant Fibo has been good at following up and lending assistance to the project underway.

Advantages

- Reasonably priced solution
- Easy assembly

Client

Veidekke

Product/delivery

- Colour Collection - HG Denver White
- Colour Collection - HG Sky
- Colour Collection - HG Creme



Fibo | Reference project

Berge primary school

With about 350 children, Berg grammar school is the largest primary school in Lyngdal.

Here, there was a desire for anything but white wet rooms, which gave contractor Frode Hansen an opportunity to dive into Fibo's Colour Collection.

For the experienced builder, the wall panels from Fibo are renowned as a product. They have used Fibo in everything from public buildings to apartments and detached houses, and emphasize quick and easy assembly and an assurance that the products will last long after the project is handed over.



“

Using Fibo gives us confidence during the construction process, and makes the work and assembly quick.

Contractor Frode Hansen

Client feedback

– Using Fibo gives us confidence during the construction process, and makes the work and assembly quick. The fact that the panels last so well over many years also gives us confidence when we deliver our projects.

Fordeler

- Rapid assembly
- Durability
- Ability to work more with colors

Client

Contractor Frode Hansen



Fibo | Reference project

Knarvik elementary school

The new Knarvik elementary school in the municipality of Lindås was completed in the spring of 2019.

Restrooms, technical rooms and the cafeteria kitchen were all equipped with Fibo wall panels in various high gloss and extra matt finishes from Fibo's Colour Collection.

The school was designed by OG Arkitekter and Skanska used as the contractor. The school was designed for up to 450 students and has an area (BTA) of 9000 m².



Client
Skanska

Product/delivery

In total approx. 1000 m² wall panels was delivered

- Colour Collection - HG London
- Colour Collection - HG Lilac
- Colour Collection - HG Sunflower
- Colour Collection - EM Lima



Fibo | Reference project

Bergetippen kindergarten

Bergetippen kindergarten was built by Christie & Opsahl AS for the Municipality of Aukra in 2013.

In the five departments of the kindergarten, they wanted to give the different room a distinct identity by means of wall panels in different colors from Fibo's Colour Collection. Strong colors such as yellow, pink and red-purple characterize all or part of all bathrooms, restrooms and changing rooms.

Another important criteria for the selection was a surface that can withstand tough use and is easy to clean daily.



“

Another important criteria for the selection was a surface that can withstand tough use and is easy to clean daily.

Christie & Opsahl AS

Advantages

- Easy cleaning
- Durability
- Exciting range of colors

Client

Christie & Opsahl AS

Product/delivery

- Colour Collection –HG in several colours

Fibo

Fibo | Reference project

Chiseldon Nursery, Swindon

Swindon Borough Council really took advantage of the opportunities provided by Fibo wall panels for its new kindergarten in Chiseldon, Swindon.

The many different decors and color choices made it possible to give each of the seven rooms its very own expression, to the joy of both children and adults.

As first-time users, Swindon Borough Council was pleasantly surprised at how much easier wall panels are to install compared to tiles. Fibo wall panels are available at full height and are assembled directly on existing walls or support; they click together and reduce the need for extra workmen.

Their experience from the kindergarten was so good that Swindon Borough Council later decided Fibo should be used in the renovation of Chiseldon Primary School.



“

This was the first time we used Fibo wall panels and we were very impressed!

Paul Foggoa, Construction Manager, Swindon Borough Council

Client feedback

This was the first time we used Fibo wall panels and we were very impressed! The wall panels required much less groundwork than tiles, are environmentally friendly, durable, easy to clean and require little maintenance. With rapid and easy installation as well, they delivered in absolutely all areas.

Advantages

- Rapid and easy assembly
- Easy cleaning
- Cost effective
- Environmentally friendly

Client

Swindon Borough Council

Fibo

Fibo | Reference project

Espira Rælingen kindergarten

All bathrooms and nurseries were equipped with Fibo wall panels when JM Entreprenør built the new kindergarten for Espira at Rælingen.

The architect recommended the high gloss wall panels from Fibo's Colour Collection as the answer to Espira's wish for an easy solution that at the same time guaranteed a good end-result.

The kindergarten was ready for use in 2017, with six units over two floors. The blue, green and white walls pleased both children and adults.



“

The blue, green and white walls pleased both children and adults.

JM Entreprenør

Advantages

- Rapid and easy assembly
- Sprightly choice of colors

Client

JM Entreprenør

Product/delivery

- In total approx. 300 m² wall panels was delivered
- Colour Collection –HG in several colours



Fibo | Reference project

Tarzanskogen kindergarten

Tarzanskogen is a kindergarten in Randaberg that was completed with six departments in 2017.

It was designed by Arkipartner AS, with Faber Bygg AS as the general contractor.

Bathrooms, changing rooms and restrooms are all equipped with Fibo wall panels. Here, both extra long lengths of 2720 mm are used as well as bold colors from Fibo's Colour Collection to give color and life to the rooms.



“

The possibility to choose among colours from Fibo's Colour Collection gave life to the rooms in the project.

Faber Bygg AS

Advantages

- Extra long lengths of 2720 mm
- Exciting range of colors

Client

Faber Bygg AS

Product/delivery

In total approx. 1700 m² wall panels was delivered

- Legato - S White
- Legato - S Polar Grey
- Colour Collection - HG several colours



Fibo | Reference project

Havåsen kindergarten

Havåsen is a municipal kindergarten in Søgne, Norway.

It was designed by the architect Ole John Dolva, who wanted to use Fibo wall panels in extra long lengths of 2720 mm in different colors from the Colour Collection.

The kindergarten has space for 100 children and was ready for use in August 2019. Before construction began, Fibo participated in a meeting with the contractor, among other things to go through assembly and what type of back board should be used.



Fibo participated in a meeting with the contractor, among other things to go through assembly and what type of back board should be used.

Åmot Bygg



Client feedback

Ole Åmot at Åmot Bygg was very satisfied with the end result.

Advantages

- Extra long lengths – 2720 mm
- Many exciting color choices

Client

Åmot Bygg

Product/delivery

- Colour Collection –HG in several colors



Fibo | Reference project

Stord Nursing Home

Engelsen Bygg AS was the turnkey contractor for the construction of a new department at Stord Nursing Home in 2019.

The new department in Leirvik consists of 48 new living units over four floors, organized in groups with common rooms and a kitchen. Nestled in the middle of the three sections is a large sensory garden of lawns, fruit trees, paving stones, sitting groups and lighting.

Fibo wall panels was chosen for all the bathrooms. Before delivery, four of the site supervisors visited the Fibo factory in Lyngdal, while Fibo held a new assembly course at the building site for the carpenters involved. A course certificate was issued to be used as documentation vis à vis the municipality of Stord that the assembly was done according to directions from Fibo.



“

Before delivery, four of the site supervisors visited the Fibo factory in Lyngdal.

Engelsen Bygg AS

Advantages

- Easily cared for walls
- Decor in light colors

Client

Engelsen Bygg AS
Architect Omega Areal AS

Product/delivery

In total approx. 1400 m² wall panels was delivered

- Marcato - S White

Fibo

Fibo | Reference project

Broxtowe Borough Council

Considerations for those with dementia were an important reason that Broxtowe Borough Council chose Fibo wall panels for their adapted housing.

Dementia experts recommended using contrasting colors to make orientation easier, and Fibo's Colour Collection offers a range of exciting colors and decors.

In addition, Fibo wall panels are very easy to clean, which was also a criterion since many of the residents have impaired functionality.



“

Installation of the wall panels went both rapidly and easily, and they require a minimum of maintenance.

Howard Draper, Broxtowe Borough Council

Client feedback

- This was the first time we used Fibo wall panels as an alternative to tile, and we are very satisfied with the result. Installation of the wall panels went both rapidly and easily, and they require a minimum of maintenance. Fibo gave us very good help throughout the project, so we are definitely going to use Fibo wall panels again.

Advantages

- Contrast colors for those with dementia
- Easy cleaning and maintenance
- Rapid assembly
- Cost effective

Client

Broxtowe Borough Council

Fibo

Fibo | Reference project

Listheimen Nursing Home

Fibo wall panels was selected for all bathroom walls when the Listaheimen nursing home was upgraded and built in fall, 2018 and winter, 2019.

The new building houses 32 living quarters and common areas, a daytime center and administration offices. The project made use of Fibo wall panels in a combination of Colour Collection and White Silk from the Legato collection.

To ensure a rapid and correct assembly of the panels, Fibo arranged a special course at the building site before start-up.



“

Good quality and flexibility inherent in the many decor opportunities.

Birgit Birgitte, Manager at Listaheimen

Client feedback

Kruse Smith meant both the quality of the products and the follow-up they received through the project was very good.

Advantages

- Good quality
- Easy assembly
- Flexibility inherent in the many decor opportunities

Client

Kruse Smith Entreprenør AS

Product/delivery

In total approx. 2500 m² wall panels was delivered

- Colour Collection - EM in several colours
- Legato - S White



Fibo also held an assembly course before start-up.

Dommersnes & Larsen AS

Fibo | Reference project

Etne Care Center

Etne care center was completed at the end of 2018 and consisted of 20 nursing home places, 20 assisted living apartments and a day center with a cafeteria and laundry.



Dommersnes & Larsen AS had used Fibo previously and chose wall panels in different decors according to the specification requiring functional walls that were easy to clean and maintain. Fibo also held an assembly course before start-up.

AF Gruppen was the turnkey contractor for the project.



Advantages

- Easy to clean and maintain
- Functional walls

Client

Dommersnes & Larsen AS

Product/delivery

In total approx. 1700 m² wall panels was delivered

- Legato - HG White
- Colour Collection - HG Milano Antrasite
- Colour Collection - HG Denver White

Fibo

Fibo | Reference project

Åsen Care Homes

Contractor Grande at Verdal chose Fibo wall panels for most of the bathrooms and technical rooms in the construction of care homes at Åsen.

They have used Fibo in several previous projects because the many and reasonable decor variations make it easy to build rooms the users appreciate. It was also important for care homes to have durable surfaces that are easy to clean.



“

Nice designs at a reasonable price!

Contractor Grande AS

Advantages

- Nice design
- Reasonable price
- Easy cleaning
- Needs little maintenance

Client

Contractor Grande AS

Product/delivery

- Colour Collection – HG Denver White
- Fortissimo – S White

Fibo

Fibo | Reference project

Public restrooms, Halmstad

The Municipality of Halmstad chose Fibo walls for renovation of the town's public facilities.

These are surfaces that are subject to hard wear and tear and many users; the municipality needed a solid and long-lasting solution that was also easily maintained.



“

The municipality needed a solid and long-lasting solution that was also easily maintained.

The Municipality of Halmstad

Client feedback

- Fibo wall panel's flat surfaces, without grout lines where dirt easily collects, are a very good choice - and at a very good price.

Advantages

- Cost-efficient
- Easy to clean and maintain
- Extremely durable

Client

The Municipality of Halmstad

Product/delivery

- Colour Collection - HG Red
- Colour Collection - HG Denver White



Fibo | Reference project

Indoor Market, Stevenage

Stevenage Borough Council chose Fibo walls for their renovation of the public restrooms at an indoor market in the center of town.

Wall panels replaced tile since the client wanted a solution that was 100% waterproof, easily maintained and could be assembled rapidly and cost-effectively.

Fibo gave advice on the most suitable panels, assembly instructions and follow-up underway.



“

The new wall panels are both more modern and easier to clean and maintain than the tiles we had.

Godfrey Shaw, Stevenage Borough Council

Client feedback

–The project went fast, and the new wall panels are both more modern and easier to clean and maintain than the tiles we had. We were also impressed by the help we received and will use Fibo more in coming projects.

Advantages

- Rapid assembly
- Cost-efficient
- Advice and follow-up underway

Client

Stevenage Borough Council

Fibo

Fibo | Reference project

Lyngdalshallen

Lyngdal sports club needed a cost-efficient, long-lasting solution for the wardrobes they built at the Lyngdal sports hall.

They decided on Fibo wall panels, which gave an end price that was half of what tiles would have cost. Fibo also met other criteria: easy assembly, cleaning and maintenance, since a lot of the work is voluntary.



“

Simple to clean and maintain!

Lyngdal sports club

Client feedback

- The product is easy to assemble and easy to clean. We have received compliments on the showers and wardrobes from users of the hall!

Advantages

- Simple to clean and maintain
- Long lifetime
- Cost-efficient

Client

Lyngdal sports club

Product/delivery

- Colour Collection - HG in several colours
- Marcato - S Cracked Cement

Fibo

Fibo | Reference project

Drammenshallen

Drammenshallen is one of Norway's largest sports halls.

The sports hall has four handball courts, a gymnasium, a weight training room, a mirrored room, an indoor shooting range for air weapons, and space for 4,900 spectators among other things.

All the shower facilities have been renovated with Fibo wall panels and new flooring, in addition, 200-300 meters of Fibo bench material was delivered for use in the wardrobes.



Client
Drammenshallen

Product/delivery

- Colour Collection - HG Denver White

Fibo

Fibo | Reference project

Service building, Municipality of Halmstad

The Municipality of Halmstad wanted a good looking, durable and easily maintained solution for its new service building.

As with previous projects, the choice fell to Fibo wall panels, with which they have had positive experience.

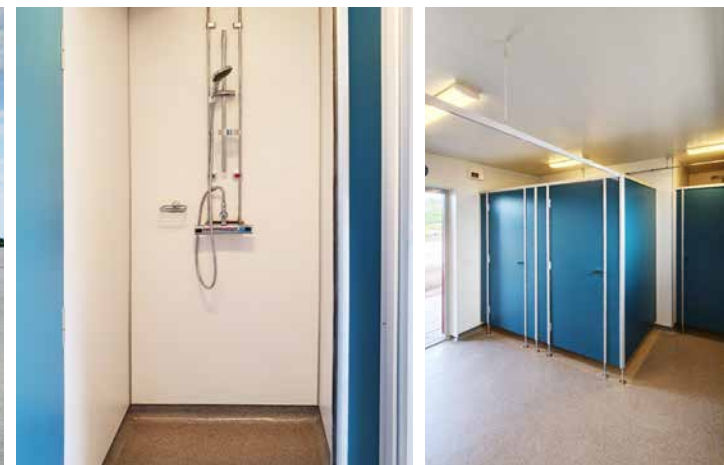
Fibo's 100 percent waterproof wall system is well suited in public buildings with heavy traffic. The surfaces can withstand extra hard use and are easily cleaned with a wet cloth and neutral detergent.



“

Experienced the wall panels as easy to work with and are well pleased with the result.

Municipality of Halmstad



Client feedback

BAB, who assembled the wall panels, experienced them as easy to work with and are well pleased with the result.

Advantages

- Easy cleaning and maintenance
- Durability
- Cost effective
- Nice design

Client

Municipality of Halmstad

Product/delivery

- Colour Collection
 - HG Aberdeen, Aquamarine and Denver White

The Fibo logo consists of the word "Fibo" in a bold, light blue sans-serif font. A small red square is positioned above the letter 'i'.

Fibo | Reference project

Alta Fire Station

In October, the ribbon was officially cut for the new fire station in Alta.

It was designed by Verte Landskap og arkitektur AS, and Tecto Entreprenør AS was the general contractor.

The new fire station has two floors, one of which is underground. It collects all of the fire department's activities in one place and replaces the old station from the 1960s.

Fibo delivered wall panels for the workshop, corridors, wardrobes and showers.



“
Fibo delivered wall panels for the workshop, corridors, wardrobes and showers.

Tecto Entreprenør AS



Client

Tecto Entreprenør AS

Product/delivery

In total approx. 1100 m² wall panels was delivered

- Legato – S White in 2.4 and 2.7 m lengths



Fibo | Reference project

The Hilltop Community Center

Prestige Property Maintenance Marlow Ltd (PPMM) builds and maintains properties for both private persons and professional players.

When upgrading the toilets at The Hilltop Community Center in High Wycombe, the old tiles were replaced with Fibo wall panels in various tile designs.

The wall panels gave the toilets a more modern look, while making them easier to clean. Rapid assembly and a shorter renovation period minimized the inconvenience for users along the way.



“

They were just the ideal choice for Hilltop. While tiles require more groundwork, the Fibo wall panels can be assembled directly on existing walls or support.

Penny MacColl, Director, PPMM

Client feedback

The wall panels are easy to install, easy to keep clean, nice looking and have a quality that lasts. The tiles they had were both outdated and in poor condition. The new wall panels have a modern look, more like a boutique hotel, and would have looked fine in any bathroom.

Advantages

- Modern design
- Rapid and easy assembly
- Easy cleaning and maintenance
- 15-year warranty

Client

Prestige Property Maintenance Marlow Ltd (PPMM)

Product/delivery

Adagio - HG Toscana and Marcato - S Acasia

Fibo

Fibo | Reference project

MyTraining Uppsala

MyTraining has two fitness centers in Uppsala, where they offer health mapping and training both individually and in groups.

They were not happy with the tile solution in their showers which proved difficult to keep clean with so much use. Therefore, they switched to Fibo wall panels, a 100 percent waterproof solution with smooth surfaces without grouting joints where dirt adheres and accumulates.

Today, they experience both easier cleaning and fewer maintenance requirements. Easy assembly enabled MyTraining to save a lot on installation costs compared with tiles which demand a lot more groundwork.



“

It looks good, it's easy to care for and economically advantageous!

MyTraining Uppsala



Client feedback

- We are so satisfied! It looks good, it's easy to care for and economically advantageous. We won't choose anything but Fibo in the future!

Advantages

- Easy cleaning
- Durability
- Cost effective

Client

MyTraining Uppsala

Product/delivery

- Marcato - S Cracked Cement

Fibo

Fibo | Reference project

STC training club

STC operates 87 training centers over large parts of Sweden. When renovation of the showers at the center in Gothenburg came up, they wanted to try two different Fibo wall panel decors.

It was important for a facility that is used so much to have a solution that was reasonably priced and easy to clean daily.

STC training club is also concerned with the environment where Fibo's PEFC certified wood is a solid, sustainable alternative.



The carpenters who assembled the wall panels were very satisfied with how easy it was.

STC training club



Client feedback

- The carpenters who assembled the wall panels were very satisfied with how easy it was. STC training club commented that the end result was very nice.

Advantages

- Easy cleaning
- Durability
- Environmentally friendly
- Cost efficient

Client

STC training club

Product/delivery

- Marcato - Grey Concrete and S White



Fibo | Reference project

Coop Extra Eslöv

Byggsystem is responsible for the construction of all new Coop stores in Skåne.

They have chosen to use Fibo wall panels instead of tiles, for a neat and affordable solution that is easy to maintain – and where they save up to half the time on assembly.

At Coop Extra in Eslöv, Denver White was used in the shop/kiosk, fresh produce department and around the empty bottle return station.



“

The carpenters were very satisfied with the assembly which they found went rapidly and easily!

Byggsystem

Client feedback

- The carpenters were very satisfied with the assembly which they found went rapidly and easily.

Advantages

- Nice look
- Easy cleaning and maintenance
- Rapid assembly
- Value for money

Client

Byggsystem

Product/delivery

- Colour Collection –HG Denver White



Fibo | Reference project

Rosfjord Strandhotell

The bathrooms at this Lyngdal hotel are clad in wall panels produced at Fibo's factory site "just down the road."

Rosfjord Strandhotell is beautifully situated by the beach at Lyngdal. The Ubostad family has received guests for over four generations and offers hotel rooms and apartments to vacationers and conference guests.

The bathrooms at this Lyngdal hotel are clad in wall panels produced at Fibo's factory site "just down the road." The choice was determined primarily by its easy assembly and much easier to maintain since unlike tile, there is no grout, where dirt easily accumulates, to clean.



“

Using Fibo wall panels was significantly cheaper than tiles.

Rosfjord Strandhotell



Client feedback

Using Fibo wall panels was significantly cheaper than tiles. The esthetics were also important.

Advantages

- Price
- Quality
- Esthetics
- Local business

Client

Rosfjord Strandhotell

Fibo

Fibo | Reference project

Svalbard Hotel The Vault

Svalbard Hotel The Vault is a unique hotel with 35 rooms in Longyearbyen.

It was completed in 2018 and is, as the name indicates, inspired by the global seed vault on Svalbard. At the hotel, guests can view pictures of the vault, get information about what kinds of seed are stored there and where in the world they come from.

The contractor, Consto Svalberg AS, had good experience with Fibo wall panels from previous projects. Rapid assembly time, a safe and functional solution and easy cleaning made them want to use them again in the hotel, where the Cracked Cement decor reinforces the inspiration from the mountain vault.



“

Had good experience with Fibo wall panels from previous projects.

Entreprenør Consto Svalbard AS

Client feedback

Projects on Svalbard demand good logistics and products that last – things that Fibo could also deliver.

Advantages

- Rapid assembly
- Easy cleaning
- Safety and functionality

Client

Entreprenør Consto Svalbard AS

Product/delivery

In total approx. 800 m² wall panels was delivered

- Colour Collection - HG Denver White
- Marcato - S Cracked Cement



Our own caretaker could do much of the work!

Morgedal Hotel

Fibo | Reference project

Morgedal Hotel

Morgedal Hotel is a full-service hotel in the heart of Telemark. In 2016, they had a new opening after a major renovation where Fibo wall panels were used in bathrooms and restroom facilities.

Rapid and easy assembly allowed the hotel to let its own caretaker do much of the work.

In addition to 67 guest rooms, the hotel features a banquet hall, swimming pool, gym and tennis center.



Advantages

- Rapid and easy assembly
- Could be done by the hotel's own caretaker

Client

Morgedal Hotel



Fibo | Reference project

Brages Auto Business

Brages Auto Business is one of Møre and Romsdal's largest car dealers.

In 2019 they moved all their new cars from the facility at Moa to brand new buildings in the Digernes Næringspark.

Here, you will now find a sales department, a complete parts warehouse and a state-of-the-art mechanical workshop. The workshop, public area and restrooms are all equipped with Fibo wall panels in white, grey and black decorative variants in both matte and glossy surfaces.

The developer had good experience with Fibo from earlier and therefore knew that the wall panels could deliver on the desire for easy cleaning and maintenance.



“

We got good service and help from Fibo with respect to price inquiries, delivery and not least tailoring.

Emineo

Client feedback

We got good service and help from Fibo with respect to price inquiries, delivery and not least tailoring.

Advantages

- Easy cleaning
- Many decor variants

Client

Emineo

Product/delivery

In total approx. 1000 m² wall panels was delivered

- Marcato - White Slate and Marina Grey Oak
- Worktop - Black Trento

Fibo

Fibo | Reference project

Devico

Devico is a company that carries out geological investigations on land.

Fibo was chosen for their walls because of its fine decor. It was also desirable to have a solution that was both easy to assemble and keep clean daily.



“

We chose Fibo because of the decors.

Devico

Client feedback

- The result was very good and it has provided a solution that is easy to clean and needs little maintenance.

Advantages

- Nice design
- Easy cleaning
- Rapid and easy assembly

Client

Devico

Product/delivery

In total approx. 270 pcs wall panels was delivered

- Legato - Titan
- Marcato - Marina Oak
- Colour Collection - Aberdeen and Svalbard



Value for money together with easy cleaning and maintenance were important reasons for the choice of Fibo.

Isfjord Norway AS

Fibo | Reference project

Isfjord Norway

Isfjord is a Norwegian seafood producer located outside Trondheim.

They process approx. 5,000 tons of salmon and trout every year, and produce fillets, portions and smoked products.

When building a new factory at Orkanger, Fibo wall panels in extra long lengths of 2720 mm were delivered for the changing rooms and showers.

Value for money together with easy cleaning and maintenance were important reasons for the choice of Fibo.



Client feedback

The client was very satisfied with the end result.

Advantages

- Easy to clean and maintain
- Safe solution
- Cost effective

Client

Isfjord Norway AS

Product/delivery

In total approx. 1000 m² wall panels was delivered

- Legato - Polar Grey in 2720 mm length



Fibo | Reference project

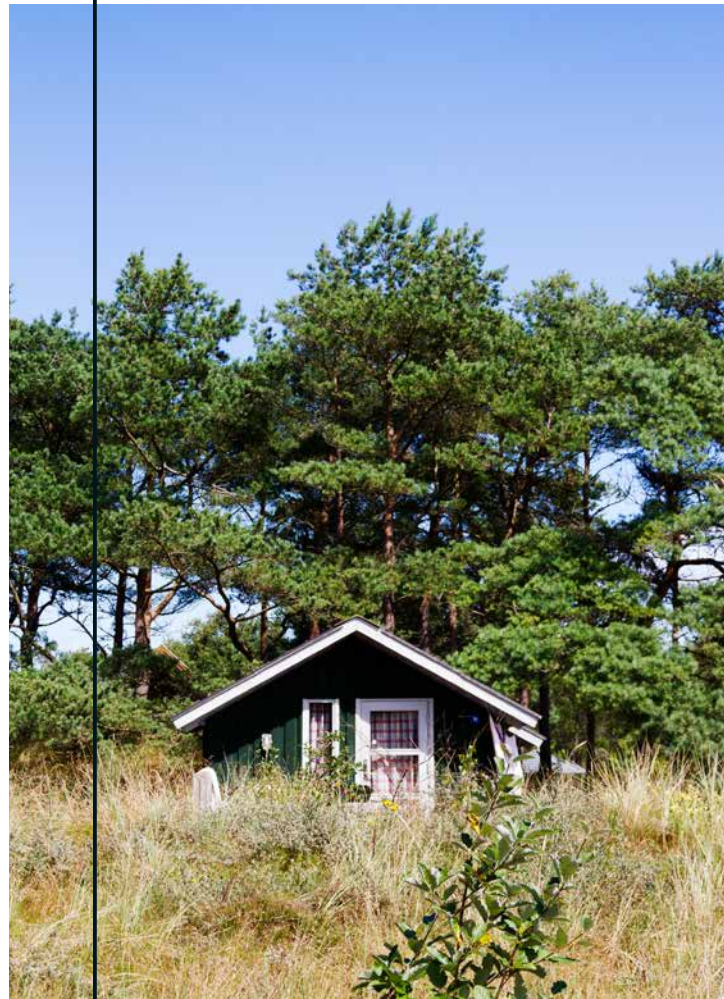
Råbjerg Mile Camping

When Råbjerg Mile Camping renovated their restrooms, they wanted a solution that was easy to keep clean while at the same time looking nice and modern.

Råbjerg Mile Camping is located 12 km from Skagen, near to both the wild North Sea and the calmer Kattegat. During the summer season, 1,500 guests a day come to enjoy nature and the many activities available; including indoor swimming facilities, football fields, tennis courts and outdoor swimming pools.

For the renovation of their restrooms, they wanted a solution that was easy to keep clean while at the same time looking nice and modern. The choice fell on Fibo wall panels, which come in several hundred decors in the best of modern Scandinavian design.

The wall panels are also easy to assembly and mean less maintenance and more time to take care of the camping guests.



“

The best about using Fibo is the short delivery time, easy assembly and the top quality of the products!

Flemming Thomsen, owner and operating manager of Råbjerg Mile Camping

Client feedback

The best about using Fibo is the short delivery time, easy assembly and the top quality of the products!

Advantages

- Modern design
- Easy cleaning
- Rapid and easy assembly

Client

Råbjerg Mile Camping

Product/delivery

- Colour Collection - HG Denver White
- Marcato - S Cracked Cement



Fibo | Reference project

Kingsmeadow House

Kingsmeadow House is an over 200 year old castle in the quiet town of Peebles in Scotland.

When they were about to renovate the bathrooms, they discovered both spacial challenges and uneven walls. This made it difficult to use tiles.

The owners wanted good water protection from floor to ceiling, which Fibo delivers. The wall panels are 100 percent waterproof and can easily be mounted on existing walls or studs. The owners found both the quality and design perfect.



“

The wall panels were easily assembled and they were stylish.

Alan Mawer, Owner and developer of Kingsmeadow Estate



Client feedback

- The wall panels were easily assembled and they were stylish.

Advantages

- Nice design
- 100 percent waterproof
- Easy assembly

Client

Peebles/Meadow

Fibo

Fibo | Reference project

The Aarhus Concert Hall

The Aarhus Concert Hall welcomes more than one million guests each year to 1,500 events spread across six halls and eleven stages.

It was designed by the local architects Kjaer & Richter in 1982, and it was important to preserve the original style throughout the renovations in 2013.

The same was true for the public restrooms. The wall panels therefore had to be placed tightly, with discrete joints. The many decor variants and assembly options made it clear that Fibo could deliver the esthetic expression the Concert Hall was after – with a long-lasting quality.



“

Fibo was able to deliver the esthetic expression we wanted.

Jesper Kjær, Building manager for the Concert Hall

Client feedback

–Fibo was able to deliver the esthetic expression we wanted, and they also customized for the solutions we wanted.

Advantages

- Exciting design
- Quality
- Options for special customizations

Client

The Aarhus Concert Hall



Fibo | Reference project

Magna Housing

Magna Housing is a non-profit property manager that operates more than 8,500 rental homes.

They decided to transition to Fibo wall panels at the end of 2017, and have used these on more than 100 of their bathrooms in 2018.

Here the tenants are given a choice from among three different decors: Frost Blue, Tuscany and Sugar Sparkle, which have all proved popular.

Rapid installation, easy maintenance and the robustness of the wall panels were important reasons for choosing Fibo. Many of the bathrooms are designed for residents with disabilities and must withstand, for example, wall mounted handles for support and lifting.



“

It looks good, requires little maintenance and our assembly team loves how easy it is to set up.

Denise Rhodes, Contract Manager Magna Housing

Client feedback

We provide quality products and services, which is why Fibo wall panels are a perfect match for us. It is the ideal product for efficient, high-quality renovation: It looks good, requires little maintenance and our assembly team loves how easy it is to set up.

Advantages

- Rapid assembly
- Can withstand adapted solutions for residents with disabilities
- Active design
- Easy maintenance
- Positive customer service

Client

Magna Housing

Product/delivery

Adagio - Frost Blue, Toscana and Sugar Sparkle



Fibo | Reference project

Housing, Powys County Council

Powys County Council received a lot of negative feedback on the bathrooms from its tenants, relating to old and worn tiles that were difficult to maintain.

They therefore offered Fibo wall panels as an alternative when they began extensive renovations.

The feedback from the residents was good: Without grout where dirt accumulates, the Fibo wall panels were easier to clean and maintain.

For the authorities, there was also a big gain in faster installation, where the new wall panels were finished in one day compared to the two or three days it took for tiles. In addition, there were also ideal decor variants for tenants who suffered from reduced vision and dementia.



“

Since we started using Fibo wall panels, the feedback has improved: Residents confirm that they are much easier to clean.

Mike Jarrett, WHQS Contracts Officer, Powys Council

Client feedback

Many of our tenants were dissatisfied with the tile, typically because they were difficult to maintain, were unsightly and detached from the wall. But since we started using Fibo wall panels, the feedback has improved: Residents confirm that they are much easier to clean.

Advantages

- Easy cleaning
- Durability
- Rapid assembly

Client

Powys County Council

Product/delivery

Adagio – S Frost Blue

Fibo

Fibo | Reference project

PROCare

PROCare adapts kitchens, bathrooms and wet rooms for people with functional impairments.

They chose Fibo wall panels for a job that included more than 800 bathrooms in social housing projects throughout the United Kingdom. For such a large renovation project, it was decisive that the wall panel be rapid and easy to install, complimented PROCare's own solutions, and that the material came when specified. In addition, a large range in different price classes offered the ability to adapt to the client's budgets.

Before the project began, representatives from Fibo gave an assembly course for PROCare's developers. The best solutions for different rooms were reviewed to ensure the best possible progress and result in the continuing work.



“

We are using Fibo wall panels in a number of social housing projects in Leicester, Manchester, York and Bristol.

Karen Owens, PROCare Business Development Manager

Client feedback

We are using Fibo wall panels in a number of social housing projects in Leicester, Manchester, York and Bristol. The wall panels are ideal for bathrooms and other wet rooms, and compliment our adapted products since they are durable, rapid and easy to assemble. Fibo wall panels do not attract as much dirt, and are therefore much easier to clean and maintain while they have a much superior lifetime.

Advantages

- Rapid and easy assembly
- Easy cleaning and maintenance
- Excellent durability and long lifetime
- Customer service

Client

PROCare

Fibo

Fibo | Reference project

Gulaksveien

Block Watne has completed a modern, four storey apartment building on Gulaksvegen.

The 18 two- and three-room apartments have been built to a consistently high standard, where the desire for a simple and timeless design has brought in Fibo wall panels for all the bathrooms.



“

Timeless design!

Block Watne

Advantages

- Rapid assembly
- Easy maintenance
- Timeless, elegant design

Client

Block Watne

Product/delivery

- Colour Collection –HG Denver White



Fibo | Reference project

Nordbolig vacation apartments

After having used Fibo at Sjusjøen in 24 units, I have a positive overall impression and can warmly recommend their products to my contacts.

Fibo is a solid product of high quality; in addition, there are many options from which to choose in their range, says Robert Westbye Erichsen, construction manager at Nordbolig Hamar AS.

After having used Fibo at Sjusjøen, I have a positive overall impression and can warmly recommend their products to my contacts. All service and follow-up has been impeccable. Deliveries have arrived on time and I have always received the goods specified on the work order. Therefore, I can highly recommend Fibo.



“

I can highly recommend Fibo.

Robert Westbye Erichsen, Construction manager at Nordbolig Hamar AS

Advantages

- Impeccable service and follow-up from Fibo's side
- Solid product of high quality
- Many options from which to choose in the wall panel range

Client

Nordbolig Hamar AS

Fibo

Fibo | Reference project

BRF Karlsgård

In Skellefteå, Grönbo AB is building a total of 57 apartments distributed over five buildings.

The apartments are from 58 to 124 square meters large and have up to three bedrooms.

Grönbo AS wanted to use Fibo in the bathrooms and kitchens of all the apartments. The residents could then choose from among many different decors for wall panels and kitchen backsplash; the most popular was a high gloss Denver White from the Fortissimo collection.



Client

Grönbo AB

Product/delivery

- Wall panels in bathrooms: Colour Collection – HG Denver White
- Kitchen Board: Several different decors

Fibo

Fibo | Reference project

Bjursätragatan

In Rågsved, J Tysk is rehabilitating two apartment buildings of 121 apartments for Lesconil AB.

All bathrooms will have Fibo wall panels in high gloss Denver White together with a modern cement decor.



Advantages

- Modern decors

Client

J Tysk

Product/delivery

In total approx. 2400 m² wall panels was delivered

- Colour Collection - HG Denver White
- Marcato - STN Grey Sahara



Fibo | Reference project

Modern Home, Jæren

The Vold family wanted a functional home, adapted to their active family with large, good rooms when in 2016 they were ready to build a new home with a view over Jærlend.

They found a solution in a modern house from BoligPartner with lots of light, large windows and efficient, stylish surfaces.

The choice fell on Fibo wall panels for the house's laundry room and two bathrooms. Both bathrooms were clad in white wall panels combined with darker contrast panels used inside the shower.

In the laundry room, a completely plain panel in a modern gray color was used.

The design opportunities together with easy cleaning and high durability were important for the family. Many leisure activities mean frequent changes of clothes and a lot of showering – and the walls must withstand this.



“
Both bathrooms and the laundry are in daily use
and happily, we chose Fibo which withstands
this and only needs easy cleaning.

The Vold family



Client feedback

–We've lived in our new home for almost a year now, and are very pleased with the choice of Fibo wall panels. Both bathrooms and the laundry are in daily use and happily, we chose Fibo which withstands this and only needs easy cleaning.

Advantages

- Attractive design
- Easy cleaning
- Durability

Client

The Vold family

Fibo

Fibo | Reference project

Hove Gård

At Hove Gård outside Sandnes, a number of new, detached houses, row houses and apartments have been built in a completely new residential area.

Jadarhus AS is one of the largest residential builders in Jæren and has chosen Fibo wall panel for their bathrooms in the project.



“

We chose Fibo wall panels for all the bathrooms in the project.

Jadarhus AS

Client

Jadarhus AS

Product/delivery

Colour Collection - HG Denver White

Fibo

Fibo | Reference project

Student housing, Trondheim

Studentsamskipnaden in Trondheim builds and operates housing for the city's many thousand students.

Here, they can choose among everything from a room in a collective to 4 room apartments, small single houses in the country side or apartment buildings made of solid wood.

Studentsamskipnaden has three criterias for kitchen panels: Rapid assembly, easy cleaning and that they can withstand a blow or two. With so many users and a high turnover of residents, there is an extra requirement for durability – something that has made the operations department come up with the expression “student approved” to designate exceptional durability.

They get this quality with Fibo wall panels. At the same time, they keep costs down since the assemblies can easily be done by a carpenter or other kitchen assembly person who is nonetheless there, without the need for further professionals.



“

*Our three criterias for kitchen panels:
Rapid assembly, easy cleaning and that
they can withstand a blow or two.*

Trondheim Studentsamskipnad

Client feedback

- The cleaners have commented that Fibo wall panels are easy to clean, without the usual problems with grout where dirt gathers.

Advantages

- Durability
- Easy cleaning
- Rapid and easy assembly

Client

Trondheim Student Housing

The Fibo logo is displayed in a light blue, sans-serif font. The letter 'i' is lowercase and features a small red square above its dot. The logo is centered within a dark blue rectangular background.

Fibo

If you want to make
your bathroom stylish,
choose Fibo

FIBO USA, LLC

160 Greentree Drive
Suite 101
Dover, Delaware 19904

Tel.: 1-617-416 7180

E-mail: info@fibosystem.com

© @designbyfibo

Explore more at www.fibosystemusa.com